

open data

creating the **next** generation of empowerment



THE WORLD BANK

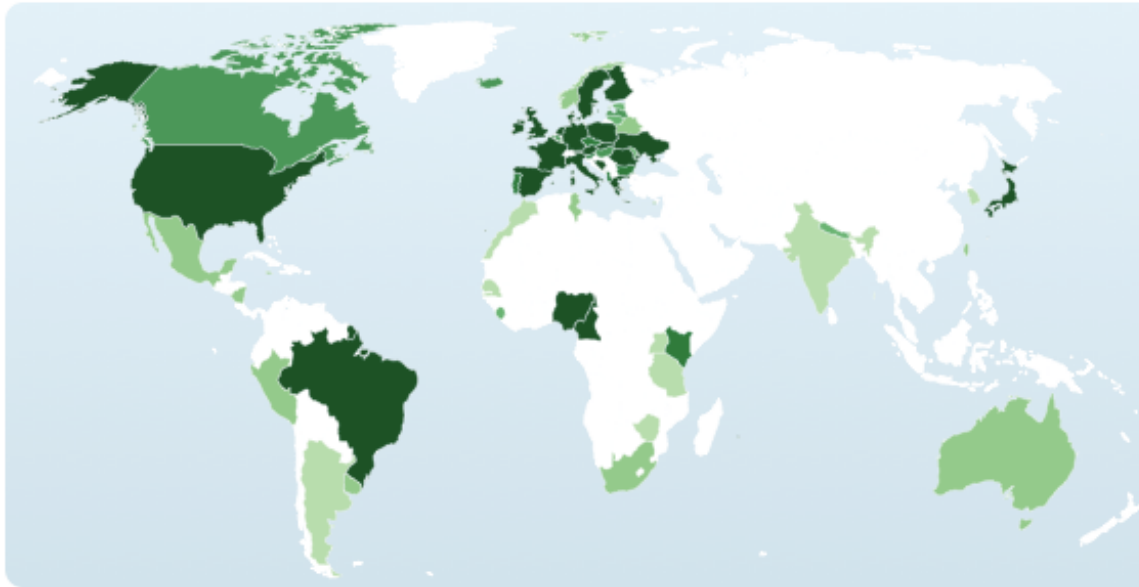
Working for a World
Free of Poverty

economic growth
job creation
improved service delivery
social policy change

A Global Movement Has Begun to Provide Transparency and Democratization of Data

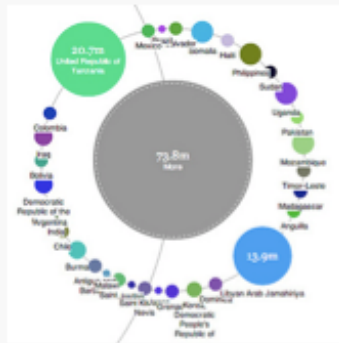
U.S. States	U.S. Cities and Counties	International Countries	International Regional
40	21	39	115





Mapping the money.

Our aim is to track every government financial transaction across the world and present it in useful and engaging forms for everyone from a school-child to a data geek.



Upload and visualize data

Upload any kind of financial data to OpenSpending and explore it with our built-in interactive visualizations. Users publish [budgets](#), [procurements](#), [spending data](#) and even [public employee salaries](#).

Use our [widgets](#) to embed your visualization on your own website.

[Upload a dataset](#)

GETTING STARTED

[What can I do here?](#)

[FAQ](#)

[Browse datasets](#)

THE PROJECT

[Spending Blog](#)

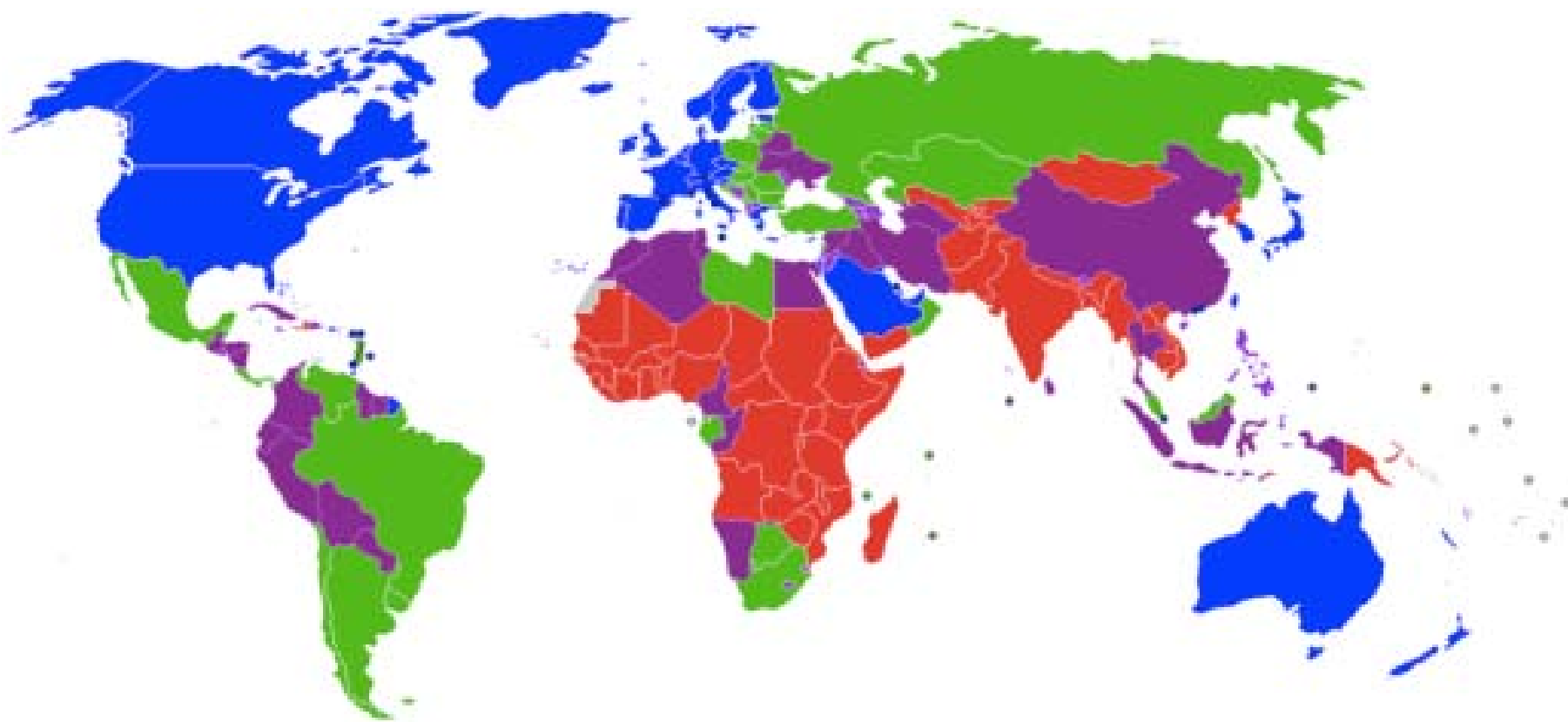
[Projects Portfolio](#)

[Mailing List](#)

[Contribute](#)



the world bank



Data

[By Country](#)
[By Topic](#)
[Indicators](#)
[Data Catalog](#)
[Microdata](#)
[Blog](#)
[News](#)
[About](#)
[Support](#)
[Products](#)

This page in: [English](#) | [Español](#) | [Français](#) | [العربية](#) | [中文](#)

World Bank Open Data: free and open access to data about development in countries around the globe.



What would a Global Partnership for a Data Revolution look like?

Grant Cameron | Posted on 8 Oct 2013

Energy, emissions and elevation: 6 quick climate facts

Tim Herzog and Mahyar Eshragh Tabary | Posted on 27 Sep 2013

Untangling the Syrian refugee crisis with Open Data

Leila Rafel | Posted on 25 Sep 2013

[View all news](#) | [View all blogs](#) »

Find an indicator

GNI per capita, Atlas method (current US\$)

BROWSE DATA



By Country



By Topic



Indicators



Use our Data

FEATURED

World Development Indicators

Open Finances

Projects & Operations

Open Government Data

Toolkit

RECENTLY UPDATED

World Development Report 2014

09 Oct, 2013

IEG World Bank Project Performance ...

01 Oct, 2013

[View data catalog](#) »

The World at a Glance

Economic Policy & External Debt

GDP (current US\$)

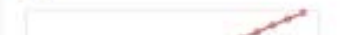
\$71.92 trillion 2012



Health

Life expectancy at birth, total (years)

71 2011



Reach the Neediest

Citizen data from unplanned communities collected for project planning



Voice from the Poor

Real-time data from 45,000 banana farmers



Transforming services

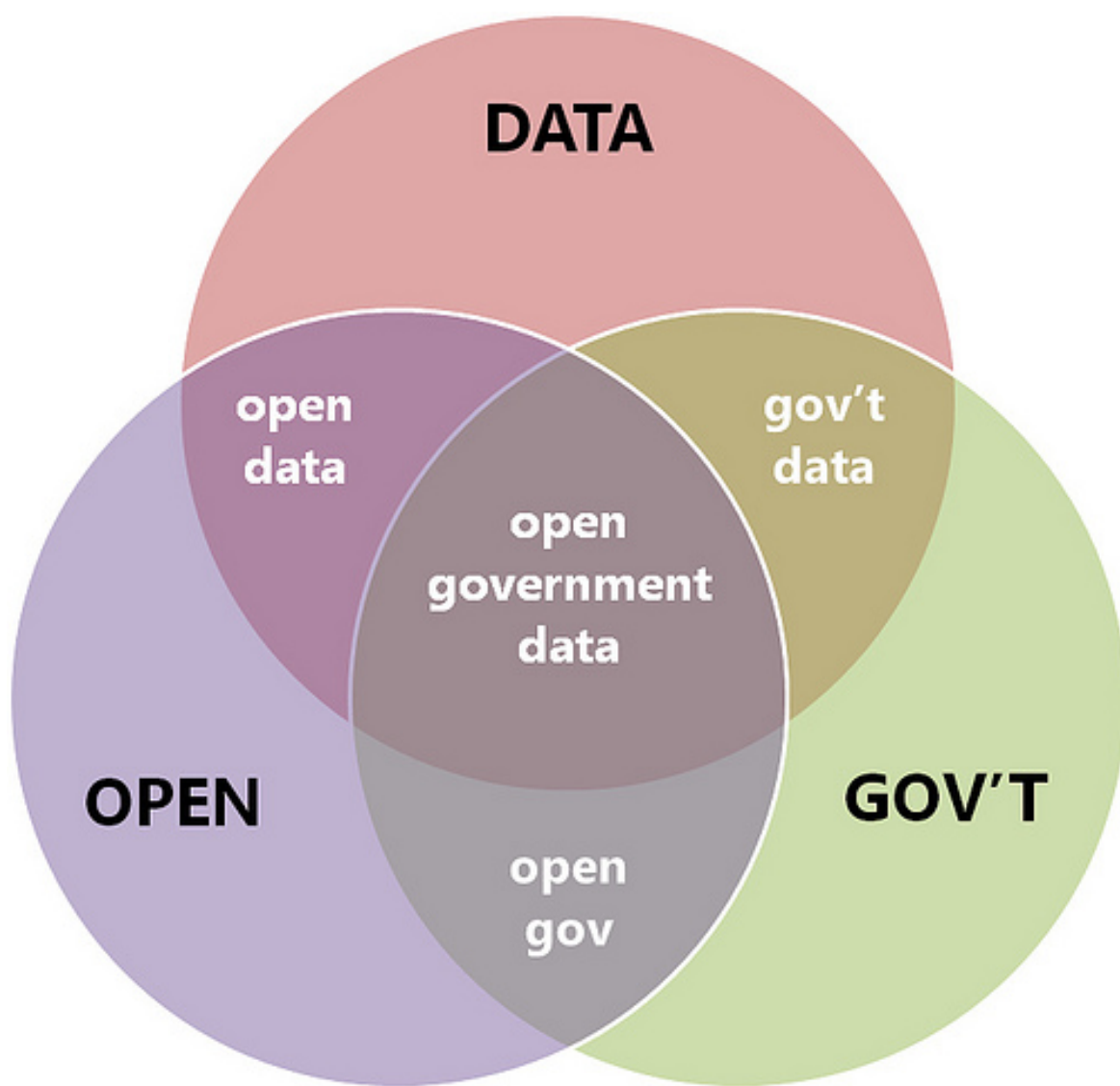
In TZ, mobile money agents outnumber all other financial outlets by 10 to 1.



some guiding
principles

platform is the market
community is the capacity
customer is the approach
empowerment is the key

open data – the basics



Open data is
data
that can be
freely
used,
reused
and redistributed
by **anyone**
for **any purpose.**

Data is **technically** open when:

You can **search** for it and **find** it easily **online**

It's available in an **editable electronic** format
or an **API**



xls, json, txt, csv, xml,
html, doc, API, odt, ods
etc.

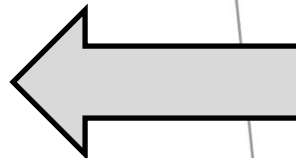
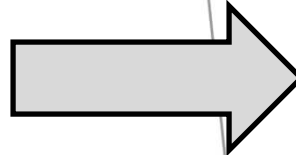


PDF, images (JPG, GIF,
PNG), other proprietary
formats.

Open Data Machine

Read

```
...:wb:data page="1" pages="736" per_page="2" total="1472" xmlns:wb="http://www.worldbank.org">
  <wb:data>
    <wb:indicator id="2.1_PRE.PRIMARY.GER">School enrolment, preprimary, national source (%
[ross]</wb:indicator>
    <wb:country id="AF">Afghanistan</wb:country>
    <wb:date>1996</wb:date>
    <wb:value />
    <wb:decimal>1</wb:decimal>
  </wb:data>
  <wb:data>
    <wb:indicator id="2.1_PRE.PRIMARY.GER">School enrolment, preprimary, national source (%
[ross]</wb:indicator>
    <wb:country id="AF">Afghanistan</wb:country>
    <wb:date>1995</wb:date>
    <wb:value />
    <wb:decimal>1</wb:decimal>
  </wb:data>
</wb:data>
```



“OPEN” LICENSE

World Development Indicators

PRE 2010

The material in this publication is copyrighted. Requests for permission to reproduce portions of it should be sent to the Office of the Publisher at the address in the copyright notice above. The World Bank encourages dissemination of its work and will normally give permission promptly and, when reproduction is for noncommercial purposes, without asking a fee. Permission to photocopy portions for classroom use is granted through the Copyright Center, Inc., Suite 910, 222 Rosewood Drive, Danvers, MA 01923 USA.

POST 2010

Rights and Permissions



This work is available under the Creative Commons Attribution 3.0 Unported license (CC BY 3.0) <http://creativecommons.org/licenses/by/3.0>. Under the Creative Commons Attribution license, you are free to copy, distribute, transmit, and adapt this work, including for commercial purposes, under the following conditions:

View Types

- Datasets
- Charts
- Maps
- Filtered Views
- External Datasets
- Files and Documents

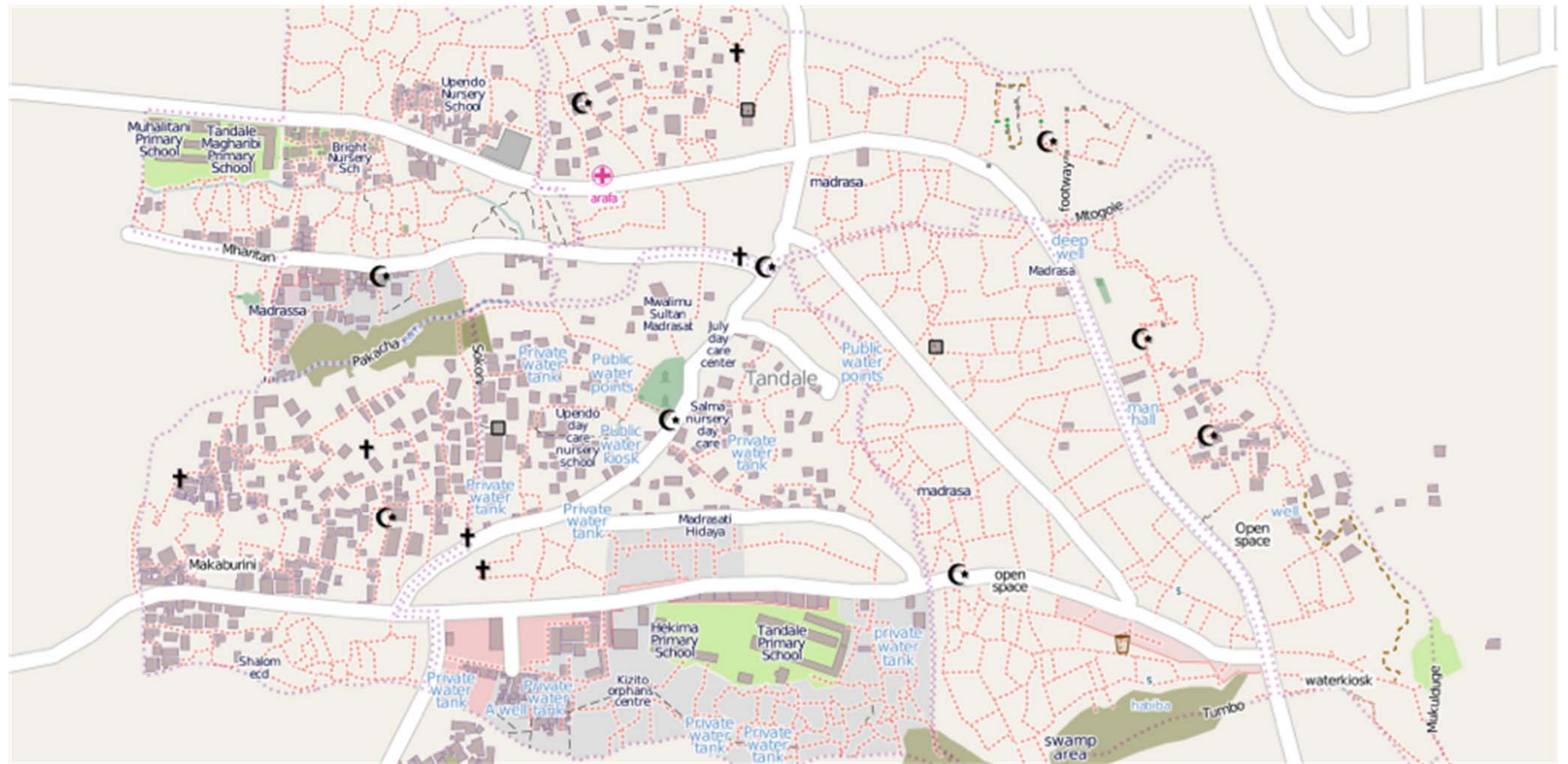
Categories Topics

- | | | |
|---------------------------------|-----------------|--------------------------|
| Environment And | county | |
| Natural Resources | education | |
| National Accounts And Inflation | population | |
| Agriculture | primary schools | |
| Counties | schools | View All |
| Education | | |
| Employment | | |
| Energy | | |
| Financial Sector | | |
| Health Sector | | |
| Justice | | |
| | | View All |

Search & Browse Datasets and Views

Most Relevant

Name	Popularity	Type	RSS
Poverty Rate, by District Poverty Rate by District	27,411 views		
County Urbanization: Nairobi Census population by rural, urban, County estimates	17,406 views		
Local Authority Expenditures by Year: Nairobi Local Authority and Constituency Development Fund Expenditures, County estimates, Kenya Shillings	15,871 views		
Per Capita County Expenditures: Nairobi Local Authority and Constituency Development Fund Expenditures, County estimates, Kenya Shillings	15,899 views		
Kenya Primary Schools, 2007 This is the list of GIS coded primary schools that was completed in 2007.	11,318 views		
Census Volume 1 Question 1 Population, Households and Density by Sublocations - 2009 2009 Census data on number of households, population by male and female, area in square kilometers, and population density by sub-location.	9,970 views		
Health Facilities Health Facilities across the Country	8,947 views		



opportunities

WHERE DOES MY MONEY GO?

Showing you where your taxes get spent

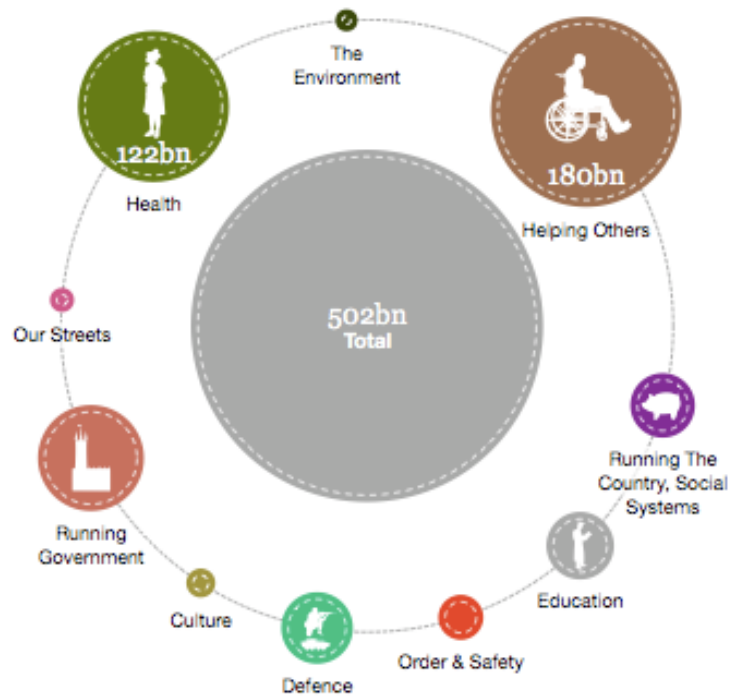


[The Daily Bread](#)

[Country & Regional Analysis](#)

[Departmental Spending](#)

[About](#)



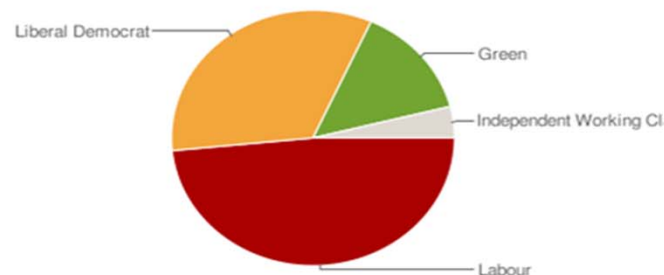
Expenditure on Total

- 18bn – 20bn (£)
- 20bn – 27bn
- 27bn – 32bn
- 32bn – 43bn
- 43bn – 47bn
- 47bn – 96bn



Oxford City Council

Website <http://www.oxford.gov.uk/> [Twitter feed](#)
Authority Type District
County Council Oxfordshire County Council
Address Town Hall, Blue Boar Street, Oxford OX1 4EY
Telephone 01865 249 811
Chief Executive Peter Sloman
Population 153,900 (Source: ONS Crown Copyright)
Police Force Thames Valley Police
Wikipedia Url http://en.wikipedia.org/wiki/Oxford_City_Council



Other info

External links

- [WhatDoTheyKnow.com Fol requests](#) (feed)
- [Office for National Statistics page](#)
- [eGovernment Register page](#)
- [ONS SNAC ID](#): 38UC

Statistics

Happiness Survey 2008 [more data»](#)
 % who are satisfied with their local area as a place to live **86.5**
 Local Government Pension Funds 2008-07 [more data»](#)
 Market Value - at end of year £000 **1048951**

Online services

[See full list](#)

Current councillors

- **Mohammed Niaz Abbasi** (Labour)
- **Mohammed Altaf-Khan** (Liberal Democrat)
- **Alan Edmund Armitage** (Liberal Democrat)
- **Antonia Bance** (Labour)
- **Laurence Peter Baxter** (Labour)
- **Elise Benjamin** (Green)
- **UPDATED** **Stephen Thomas Brown** (Liberal Democrat)
- **Clark L Brundin** (Liberal Democrat)
- **James Robert Martin Campbell** (Liberal Democrat)

Council Committees

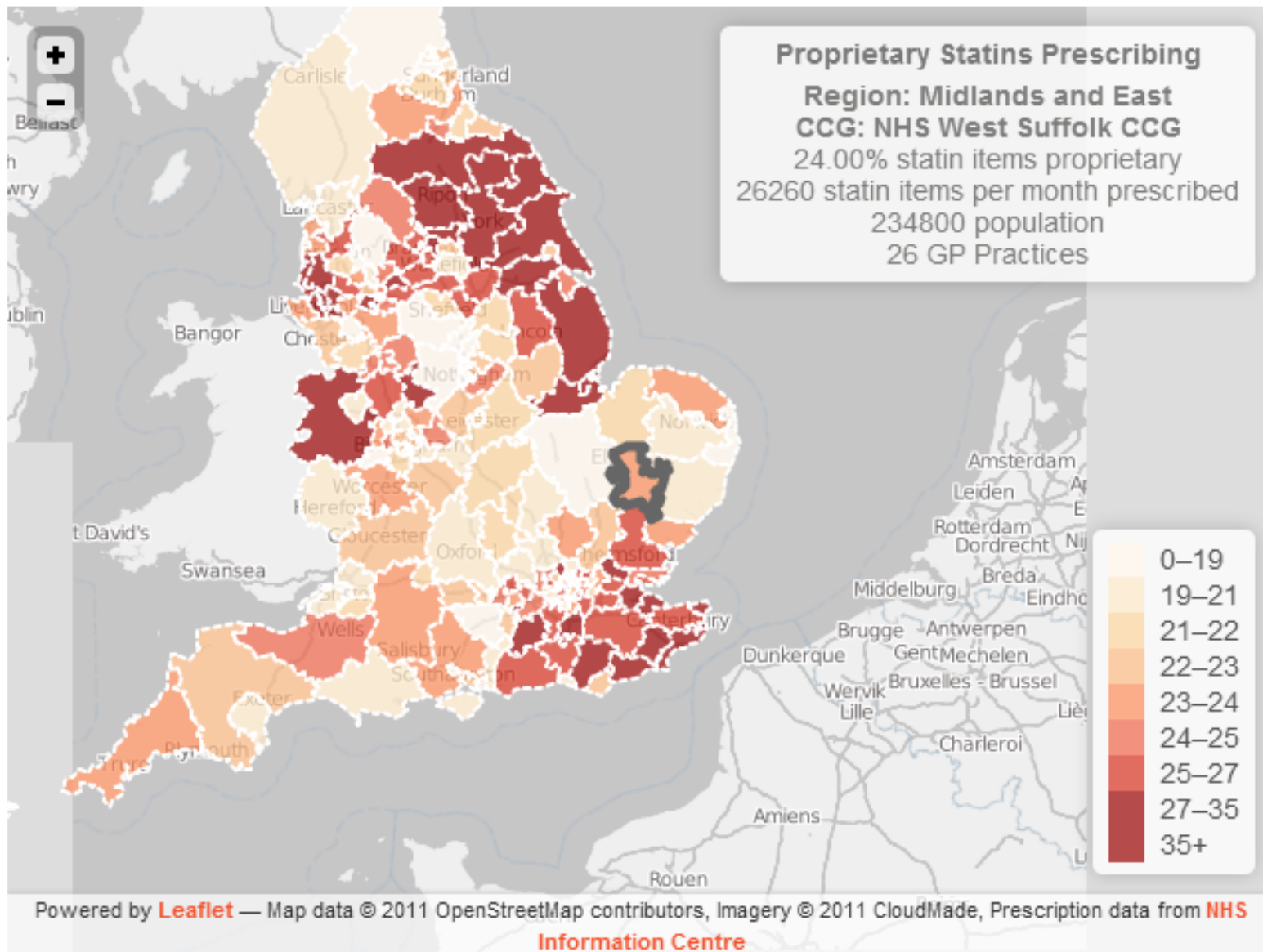
Showing only currently active committees. *Include inactive committees*

- **Audit and Governance Committee** (next meeting: **NEW** Jan 26 2010, 5.00PM)
- **Central South and West Area Committee** (next meeting: **NEW** Jan 12 2010, 5.30PM)
- **City Executive Board** (next meeting: Dec 15 2009, 5.00PM)
- **Communities & Partnership Scrutiny Committee** (next meeting: Feb 10 2010)

Wards

- Barton And Sandhills
- Blackbird Leys
- Carfax
- Churchill
- Cowley
- Cowley Marsh
- Headington
- Headington Hill And Northway
- Hinksey Park
- Holywell
- Iffley Fields

Percentage of proprietary statin prescribing by CCG Sep 2011 - May 2012



Home | Mobile site | About | Contact | Tools | Video | Choose and Book | Communities Translate | Log in or create an account

NHS choices Your health, your choices

Health A-Z | Live Well | Carers Direct | Health news | Health services near you

Your shortlisted Hospitals Print your shortlist

Key facts Hide content

Derriford Hospital	Royal Cornwall Hospital (Treliske)	West Cornwall Hospital (Penzance)
NHS Choices user ratings How users of this website have rated hospitals. Read more		
29 out of the 36 recommended this hospital Read/add comments about Derriford Hospital	35 out of the 55 recommended this hospital Read/add comments about Royal Cornwall Hospital (Treliske)	8 out of the 10 recommended this hospital Read/add comments about West Cornwall Hospital (Penzance)
Number of weeks MRSA free How many weeks it has been since the last MRSA infection in a hospital. Read more		
7 7 weeks	12+ 12+ weeks	12+ 12+ weeks
Risk assessment for blood clots The percentage of adults admitted to hospital that were assessed for risk of blood clots, all hospitals should assess at least 90% of patients. Read more		
89.9% of admitted patients	92.9% of admitted patients	92.9% of admitted patients
Quality and safety Hide content		
Total MRSA cases in last 12 weeks How many MRSA cases there have been in the last 12 weeks at a hospital. Read more		
2 2 cases	0 0 cases	0 0 cases
Total CDiff cases in the last 12 weeks Whether the number of cases of C. Difficile in the last 12 weeks is better or worse than average, or typical for a hospital. Read more		
Typical for a hospital of this size	Better than average for a hospital of this size 4 cases	Typical for a hospital of this size 0 cases
Mortality ratio: deaths in hospital Whether the rate of in-hospital deaths that occur in an NHS Trust is better or worse than expected compared to the national average. Read more		
Better than expected with a value of (89.7)	As expected with a value of (102.5)	As expected with a value of (102.5)

Patient ratings

Blood clots

2 recent MRSA

Low Mortality

12+ Weeks MRSA-free

Good C-Diff record

Go


Learn Languages Online. Easy & Fun.



English



Spanish



Portuguese



Swedish



Italian



French



German



Turkish

Advertise on NYTimes.com

Published: May 8, 2013

FACEBOOK TWITTER GOOGLE+ E-MAIL SHARE



How Much Hospitals Charge For the Same Procedures

Data released by the federal government on Wednesday shows that hospitals across the country charge Medicare differing amounts for the same procedure. The data includes bills submitted in 2011 by 3,300 hospitals nationwide for the 100 most commonly performed treatments and procedures like hip replacement, heart operations and gallbladder removal, among hospitals that reported at least 11 cases. [Related Article »](#)

Click on a hospital on the map at left, or search for a city



Search for (e.g. taco, cheap dinner, Max's)

Near (Address, Neighborhood, City, State or ZIP)

San Francisco, CA

- Welcome
- About Me
- Write a Review
- Find Friends
- Messaging
- Talk
- Events



TRY OUR AMAZING NEW MENU

All participating locations... ©2012 Yelp Inc. All rights reserved.

Los Compadres Taco Truck

★★★★☆ 35 reviews Rating Details

Categories: Mexican, Food Stands [\[Edit\]](#)

2nd St & Dow Pl
 San Francisco, CA 94105
 Neighborhood: SOMA



Add Photos

Health Score: 68 out of 100

Takes Reservations: No

Accepts Credit Cards: No

Delivers: No

Parking: Street

Attire: Casual

Good for Groups: Yes

Good for Kids: Yes

What's This?

Yelp works with local governments to show health inspection scores.

[Check out the full report](#)

Good For: Lunch

Alcohol: No

Noise Level: Quiet

Ambience: Casual

Has TV: No

Wheelchair Accessible: Yes

[First to Review](#)



Stanton C.

[Send to Friend](#)

[Bookmark](#)

[Send to iPhone](#)

[Write a Review](#)

La Calaca Loca ★★★★★ 307 reviews

Yelp Ad

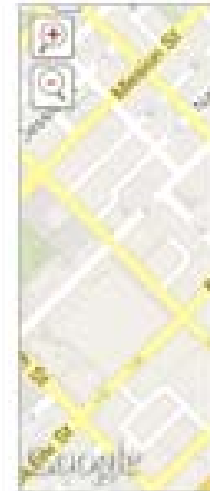


Open until 8 pm

kt b. said: "A little more than I like to pay at taquerias, but good food and generally worth it. Great burritos and grilled fish tacos. Quesadillas are also great. Salads are ..." [read more >](#)

35 reviews for Los Compadres Taco Truck

[Search Reviews](#)



[View Larger Map](#)

[Browse Nearby:](#)
Restaurants | Night

[Deals Nearby](#)



\$10
Doc's
San



\$30
Biss
San



Checkmyschool.org

Promoting transparency and social accountability, one school at a time!



School Issues

- [Rooms](#)
- [Other](#)
- [Toilets](#)
- [Computer and Internet](#)
- [Textbooks](#)

Resolved Issues



Please login to post feedback. Sign-up [here](#) or [login](#).

Feedback

jerryleonida on CAIDQUID ES, MAMBUSAO WEST,CAPIZ, REGION VI, April 2, 2013

Caidquid ES has no computer facilities. The principal reported that the school needs E-Classroom with 10 units computer.

[View 0 comment\(s\)](#)

jerryleonida on CAIDQUID ES, MAMBUSAO WEST,CAPIZ, REGION VI, April 2, 2013

Principal Villas reported that Caidquid ES needs references & textbooks (EPP, Music, P.E.

[View 0 comment\(s\)](#)

jerryleonida on CAIDQUID ES, MAMBUSAO WEST,CAPIZ, REGION VI, April 2, 2013

The toilets (2 units) of Caidquid ES are already dilapidated and direly need repairs.

[View 0 comment\(s\)](#)

jerryleonida on , April 2, 2013

According to Mrs.

[View 0 comment\(s\)](#)

A JOINT INITIATIVE OF



Partners



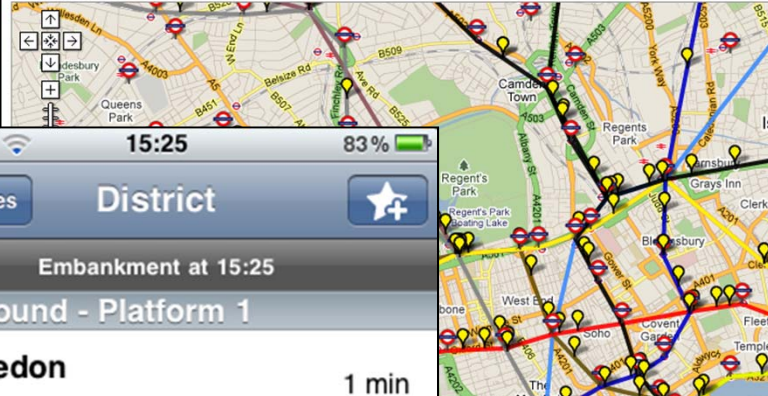
Text CMS

CMS <name of school>
<message> send to 2948

- from *3566
- rolyly amante T-2, T.I.C pls help us repair our school damage by bagyong pablo from *8755
- CABAGIAO E/S, Calinog, Iloilo lack of 2 classroom building, computers from *2904

Live train map for the London Underground, by Matth

Data collected: Tue, 15 Mar 2011 15:24:03 +0000



O2-UK 15:25 83%

Departures **District**

Embarkment at 15:25

Westbound - Platform 1

Wimbledon
Between Temple a

Richmond
At Cannon Street F

District Line
Left Tower Hill

Wimbledon
Between Aldgate E

Richmond
At Stepney Green

Download Flowd
for trance music lo

Calculadora de Tarifas
Seelt Apps - August 28, 2013
Transportation

Install Add to Wishlist

★★★★★ (129) +251 R

Calculadora de Tarifas

Calcula el valor de la carrera
Selecciona la moneda, el número de unidades y
conoce el valor real de la carrera.

Unidades: Calcular

59 Calcular

Nocturno (8pm a 5am) \$0

Puerta a puerta (Teléfono) \$0

Recargo Aeropuerto \$0

Recargo desde el Terminal \$0

Valor Unidades: \$0

Valor Carrera: \$0

1 2 3 4 5 6 7 8 9 0 #

Valor Unidades: \$3800

Valor Carrera: \$6000

ASBORometer is a mobile application that measures levels of anti-social behaviour at your current location (within England and Wales) and gives you access to key local ASB statistics.

ASBORometer is available for iPhone and Android phones. Get it FREE from the iTunes App Store or Android Market now!

This app was created by **Jeff Gillett** and made possible by the **data.gov.uk** initiative, which is opening up UK government data for public reuse.

Available on the App Store

SF park About How it Works Resources News Contact

Find parking: Select a Neighborhood

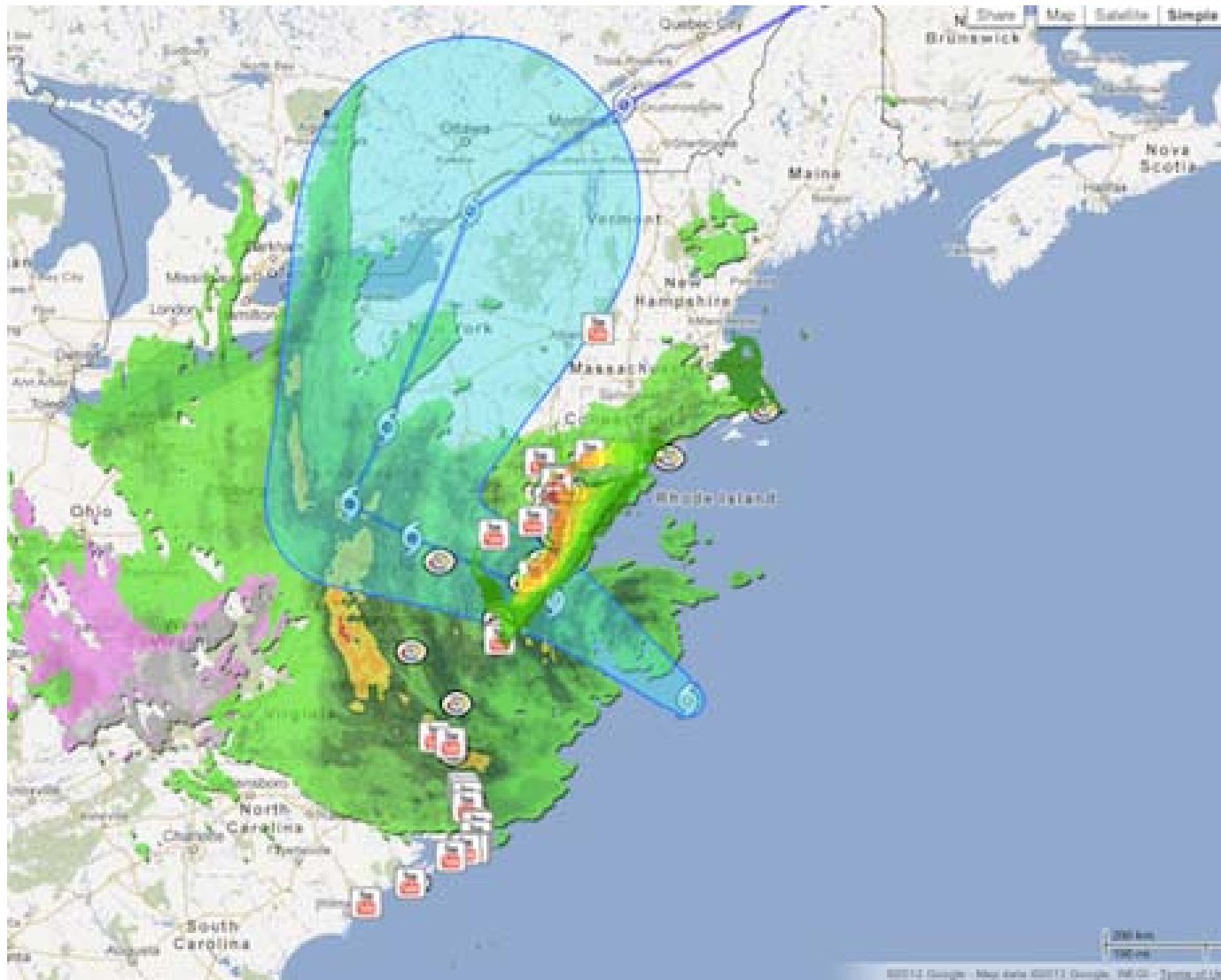
How does it work?
New technologies and approaches make parking easier and faster. This means less circling and double parking, leading to cleaner air, safer streets and a clearer path for Muni vehicles.

Download the parking app
Check parking availability and pricing for San Francisco meters and garages from your smartphone using the FREE downloadable app. Available for both iPhone and Android.

Featured News [rss](#)
SFMTA to Debut Evening Metering and Event Meter Rates Near AT&T Park on Monday, March 4
Posted on 02.19.13 in Neighborhood Parking Planning.
Filed: Press Clipping
New policy intends to improve parking availability and reduce congestion by preventing circling for on-street parking during events.

Except from "Gov on the Go: Boosting Public Sector Productivity by Going Mobile" a white paper by

Transport, public facilities and crime data among most downloaded Smartphone Apps



Hurricane Sandy

Sandy is a category 1 hurricane that is expected to bring life-threatening flooding to the US mid-Atlantic coast and hurricane-force winds from Virginia to Massachusetts, Monday evening and into Tuesday.

National Hurricane Center Latest advisory

See also: [New York City map for Sandy](#)

Reset to default view

Storm: Current location

[Zoom to area](#) - [Download KMZ](#)
See also: [Historical tracks](#) Source: National Hurricane Center

Storm: Forecast track

[Zoom to area](#) - [Download KMZ](#)
Source: National Hurricane Center

Storm: 3-day forecast cone

[Zoom to area](#) - [Download KMZ](#)
3-day forecast cones of active tropical storms and hurricanes. See also: [3-day forecast cones](#) Source: National Hurricane Center

Storm surge probability, over 6 feet

[Zoom to area](#) - [Download KMZ](#)



Possibility of surge higher than 6 feet. Source: National Hurricane Center

Active emergency shelters (US)

[Zoom to area](#) - [View data](#)
Source: American Red Cross

Weather radar (precipitation)



Source: Weather.com
Last updated: 12:44 PM (23 minutes ago)

Cloud imagery

Webcams and YouTube videos

Webcams



challenges

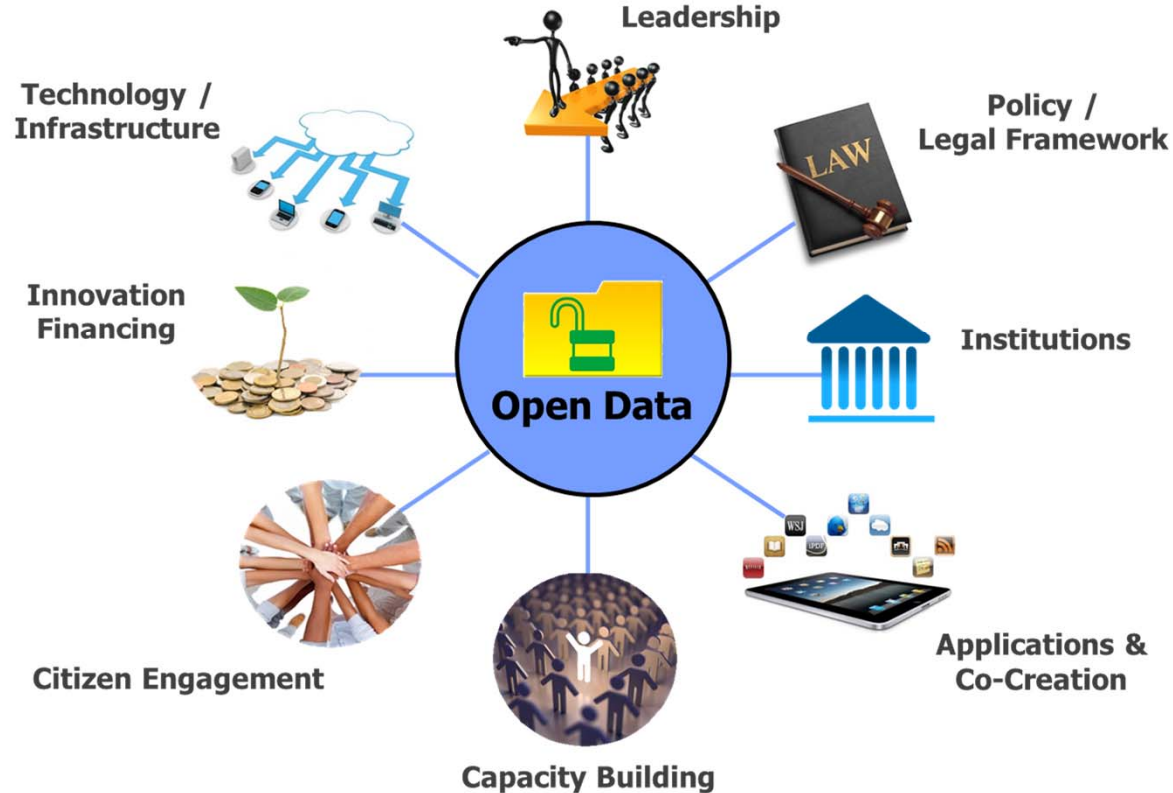
- There is no consensus
- Our data is not reliable
- Privacy
- Security
- Lost revenue
- Publish what you use
- Use open data to improve
- Anonomize your data
- Establish a system
- Data as investment

simple steps

1. Identify data
2. Check its quality
3. Adopt an open license
4. Chose an IT platform
5. Motivate re-use of your data
6. Repeat number 1

Estrategia Banco Mundial: Ecosistema de Datos Abiertos


Open Data Ecosystem



tools

Iniciativa Nacional de Datos Abiertos: Diagnóstico y Ruta Crítica

English Español Français Русский عربي 中文

 **THE WORLD BANK**
Working for a World Free of Poverty

SEARCH GO

ABOUT DATA RESEARCH LEARNING NEWS PROJECTS & OPERATIONS PUBLICATIONS COUNTRIES TOPICS

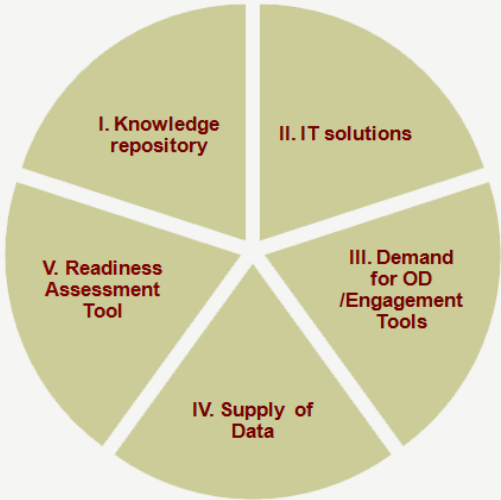
Data

By Country By Topic Indicators Data Catalog Microdata Blog News About For Developers Products

This page in English

Open Government Data Toolkit

SHARE



I. Knowledge repository

II. IT solutions

III. Demand for OD /Engagement Tools

IV. Supply of Data

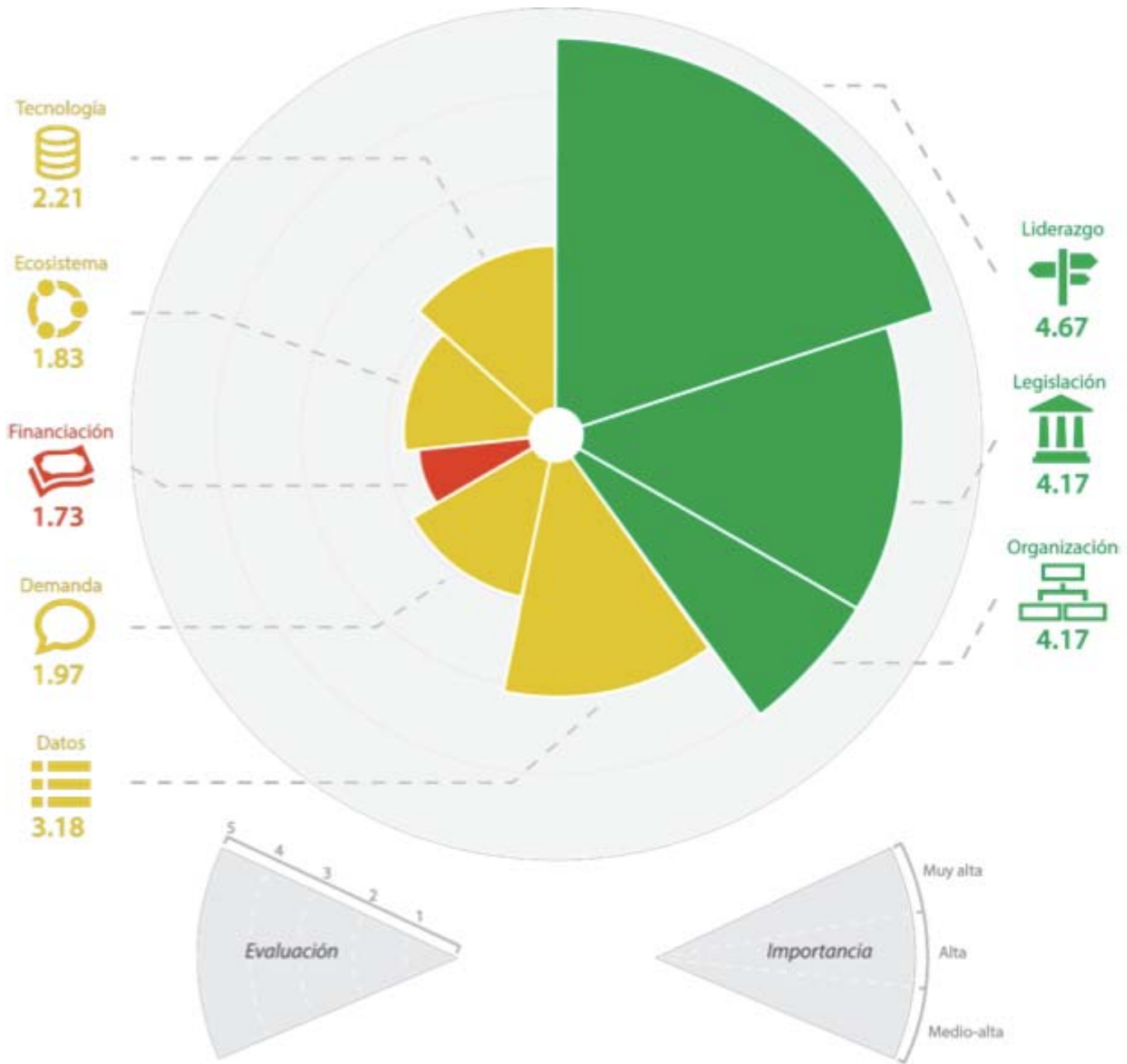
V. Readiness Assessment Tool

Open Government Data Toolkit

- › What is Open Data? How is it used? Can you give examples?
- › What are the computer requirements for Open Data?
- › What data should we put on an Open Data site?
- › How can we make sure that the data we are publishing is of good quality?
- › How do we start? Who can help?

Provide feedback at data@worldbank.org

Print



In an analogue world, policy dictates delivery. In a digital world, delivery informs policy

Mike
Bracken

open data

creating the Next generation of empowerment

